

ISSN 0972- 1800



VOLUME 22, NO. 3

QUARTERLY

JULY-SEPTEMBER, 2020



Date of Publication: 28th September, 2020

BIONOTES

**A Quarterly Newsletter for Research Notes and News
On Any Aspect Related with Life Forms**

BIONOTES articles are abstracted/indexed/available in the Indian Science Abstracts, INSDOC; Zoological Record; **Thomson Reuters (U.S.A); CAB International (U.K.); The Natural History Museum Library & Archives, London; Library Naturkundemuseum, Erfurt (Germany)** etc. and online databases.

Founder Editor

Dr. R. K. Varshney, Aligarh, India

Board of Editors

Peter Smetacek, Bhimtal, India

V.V. Ramamurthy, New Delhi, India

Jean Haxaire, Laplune, France

Vernon Antoine Brou, Jr., Abita Springs,
U.S.A.

Zdenek F. Fric, Ceske Budejovice, Czech
Republic

Stefan Naumann, Berlin, Germany

R.C. Kendrick, Hong Kong SAR

Publication Policy

Information, statements or findings
published are the views of its author/ source
only.

Manuscripts

Please E-mail to petersmetacek@gmail.com.

Guidelines for Authors

BIONOTES publishes short notes on any
aspect of biology. Usually submissions are
reviewed by one or two reviewers.

Kindly submit a manuscript after studying the
format used in this journal
(<http://www.entosocindia.org/>).

Editor reserves the right to reject articles that do not
adhere to our format. Please provide a contact
telephone number. Authors will be provided
with a pdf file of their publication.

Address for Correspondence

Butterfly Research Centre, Bhimtal,
Uttarakhand 263 136, India. Phone: +91
8938896403.

Email: butterflyresearchcentre@gmail.com

From Volume 21

**Published by the Entomological Society of India (ESI), New Delhi (Nodal Officer: V.V.
Ramamurthy, ESI, New Delhi)**

And

Butterfly Research Centre, Bhimtal

Executive Editor: Peter Smetacek

Assistant Editor: Shristee Panthee

Butterfly Research Trust, Bhimtal

Published by Dr. R.K. Varshney, A Biologists Confrerie, Raj Bhawan, Manik Chowk,
Aligarh (up to volume 20 (2018)) R.N.I. Registration No. 71669/99.

Cover Photo of *Spialia zebra* by Mukesh Panwar

TABLE OF CONTENTS

FIRST RECORD OF RED IMPERIAL BUTTERFLY <i>SUASA LISIDES</i> (INSECTA: LEPIDOPTERA: LYCAENIDAE) FROM TRIPURA, NORTH-EAST INDIA by Nihar Chandra Deb & Sudipta Mandal	110
ADDITION OF THE BUTTERFLY <i>APPIAS GALBA</i> (WALLACE, 1867) TO THE FAUNA OF MANIPUR, INDIA by Jatishwor Singh Irungbam, Harmenn Huidrom & Premjit Singh Elangbam	112
FIRST RECORD OF <i>DODONA DIPOEA</i> HEWITSON, [1866] (LEPIDOPTERA: RIODINIDAE: NEMEOBIINAE) FROM MEGHALAYA, NORTHEASTERN INDIA by Atanu Bora, Laishram Ricky Meitei, Sachin Sharma, Suman Bhowmik & Ngangom Aomoa	114
FIRST RECORD OF <i>PSEUDOCATHARYLLA NIGROCILIELLA</i> ZELLER, 1863 (LEPIDOPTERA: CRAMBIDAE) FROM KERALA by Abdulla Paleri, Md. Jahir Rayhan & Amal Ev	117
GECKO EATS ABDOMEN OF <i>ASOTA CARICAE</i> (FABRICIUS, 1775) (LEPIDOPTERA: EREBIDAE: AGANAINAE) by Sem Cordial	119
RANGE EXTENSION OF PURPLE SWIFT <i>CALTORIS TULSI</i> DE NICÉVILLE (LEPIDOPTERA: HESPERIIDAE) TO THE WESTERN HIMALAYA by Shankar Kumar, Raj Shekhar Singh, Paramjit Singh & Sundar Kumar	121
<i>ERANTHEMUM ROSEUM</i> (ACANTHACEAE) A NEW LARVAL HOST PLANT FOR THE CHOCOLATE PANSY BUTTERFLY <i>JUNONIA IPHITA</i> (LEPIDOPTERA: NYMPHALIDAE) by Raju Kasambe	125
NEEM FLOWERS (<i>AZADIRACHTA INDICA</i>) AS AN ABUNDANT SOURCE OF NECTAR FOR BUTTERFLIES IN AN URBAN LANDSCAPE IN DELHI, INDIA by Rajesh Chaudhary	128
REDISCOVERY OF THE ASSAM FLASH BUTTERFLY <i>RAPALA TARA</i> (LEPIDOPTERA: LYCAENIDAE) FROM UTTARAKHAND, INDIA by Gaurav Joshi	135
INDIAN TREE FROG <i>POLYPEDATES MACULATUS</i> CAPTURING AND SWALLOWING A LIVE GECKO by Priyadarshini Supekar & Raju Kasambe	136
NEW LARVAL HOST PLANT OF <i>TRYPANOPHORA SEMIHYALINA</i> KOLLAR [1844] (INSECTA: LEPIDOPTERA: ZYGAENIDAE: CHALCOSINAE) FROM WEST BENGAL, INDIA by Arajush Payra	138
FIRST REPORT OF THE NORTHERN JUNGLEQUEEN BUTTERFLY (<i>STICHOPHTHALMA CAMADEVA</i>) FROM MIZORAM, INDIA by Lallawmsanga & R. Zoramchhuana	141
<i>ERANTHEMUM ROSEUM</i> (ACANTHACEAE): A NEW LARVAL HOST PLANT FOR THE SOUTHERN BLUE OAKLEAF BUTTERFLY <i>KALLIMA HORSFIELDII</i> KOLLAR, 1844 (LEPIDOPTERA)	108

by Raju Kasambe & Dilip Giri	143
CONFIRMATION OF THE REDBREAST BUTTERFLY <i>PAPILIO ALCMENOR</i> (LEPIDOPTERA: PAPILIONIDAE) IN UTTARAKHAND, INDIA by Rajiv Butalia, Shankar Kumar & Ambica Agnihotri	146
TWO NEW BUTTERFLY SPECIES FOR NEPAL: <i>EUREMA ANDERSONI</i> (PIERIDAE) AND <i>LETHE DAKWANIA</i> (NYMPHALIDAE) by Piet van der Poel	148
THE DRAGONFLY <i>ATRATOTHEMIS REELSI</i> WILSON, 2005 IN NAMDAPHA TIGER RESERVE, NORTHEAST INDIA- AN ADDITION TO THE INDIAN ODONATA FAUNA by Minom Pertin, Roshan Upadhaya, Tajum Yomcha & Arajush Payra	153
FIRST RECORD OF LEECH'S SWIFT <i>CALTORIS BROMUS</i> LEECH, 1894 (INSECTA: LEPIDOPTERA: HESPERIIDAE: HESPERIINAE) FROM WEST BENGAL, INDIA by Rajib Dey	155
OVIPOSITION BY <i>JAMIDES BOCHUS</i> (STOLL, [1782]) (INSECTA: LEPIDOPTERA: LYCAENIDAE) IN NEW DELHI, INDIA by Rajesh Chaudhary & Vinesh Kumar	157
DISTRIBUTIONAL RANGE EXTENSION OF BANANA SKIPPER <i>ERIONOTA TORUS</i> (LEPIDOPTERA: HESPERIIDAE) TO THANE AND PALGHAR DISTRICTS OF MAHARASHTRA, INDIA WITH DISCUSSION ABOUT ITS HARMFUL EFFECTS ON LOCAL BANANA PLANTATIONS by Sagar Sarang, Nilesh Chandorkar, Tejas Mehendale, Gaurav Khule, Abhinav Nair, Omkar Dame & Raju Kasambe	158
NECTAR RETRIEVAL BY INSECT SWARM DOES NOT RESULT IN POLLINATION OF <i>LYONIA OVALIFOLIA</i> FLOWERS IN THE KUMAON HIMALAYA, INDIA by Ambica Agnihotri	163
A COMPREHENSIVE CHECKLIST OF BUTTERFLIES SEEN IN CORBETT TIGER RESERVE, UTTARAKHAND, INDIA by Rajesh Chaudhary, Sanjay Chhimwal & Vinesh Kumar	167
THE ZEBRA SKIPPER BUTTERFLY <i>SPIALIA ZEBRA</i> : AN ADDITION TO THE BUTTERFLIES OF INDIA by Mukesh Panwar	187
CONFIRMATION OF THE ROSY FLASH BUTTERFLY <i>RAPALA ROSACEA</i> (LEPIDOPTERA: LYCAENIDAE) IN MIZORAM, INDIA by Lallawmsanga & Zothansangi	188
SOME NEW DISTRIBUTION RECORDS OF HESPERIID BUTTERFLIES IN NEPAL by Sajan K.C.	190
BUTTERFLIES OF GOVERNMENT NURSERY, BHATAGAON, CHHATTISGARH WITH TWO ADDITIONS TO THE STATE FAUNA by H N Tandan, Gulab Chand, Ravi Naidu & Swati Tandan	195

FIRST RECORD OF LEECH'S SWIFT *CALTORIS BROMUS* LEECH, 1894 (INSECTA: LEPIDOPTERA: HESPERIIDAE: HESPERIINAE) FROM WEST BENGAL, INDIA

RAJIB DEY

D&H Secheron Electrodes Private Limited, Kolkata 700 019, West Bengal, India.
rajibdey88@gmail.com

Reviewer: Peter Smetacek

Abstract

Caltoris bromus is reported from Madhyamgram (22°42' N; 88°27' E), North 24 Parganas district, West Bengal, India. *Phragmites* is recorded as a new larval host plant for the species.

Introduction

On 16. viii.2020, a 4th instar caterpillar of an unknown Hesperiid was sighted and photographed at Madhyamgram (22°42' N; 88°27' E, 15m asl), North 24 Parganas district, West Bengal, India on a *Phragmites* sp. (Poaceae) plant. The observation was made in a small overgrown patch of wetland. The caterpillar had rolled the host leaf which was in a vertical position. The author could observe the caterpillar's head peeping out from the rolled leaf as it was busy feeding. The author collected the caterpillar and put it into a clay pot along with leaves of the same plant in his home garden. It grew into an adult butterfly by feeding on the leaves provided. On 2.ix.2020, the freshly eclosed butterfly (Figure: 01& 02) was photographed. The photographs were compared with Corbet *et al.* (1992) and keys enlarged by Evans (1949) were used to identify the specimen.

Results

The observed individual was characterised by its dark brown upperside with the spot in space 1b of the forewing (Corbet *et al.*, 1992). Additionally, the mid tibia was unspined, placing it under *Caltoris* Swinhoe, 1893 (Ek-Amnuay, 2012). In the examined specimen, the underside hindwing has two spots in spaces 2 & 3; the upper forewing has two cell spots, with the upper one smaller than the lower.

A key to identify Indian *Caltoris* species based on fascies

- 1.UnH spots in space 2 and sometimes in space 3, UpF two cellspots2, 3
- UnH spots in space 2 and sometimes in space 3, UpF no cellspots..... *kumara*
- 2.UpF upper cell spot always rather larger than lower cell spot..... *canaraica*
- UpF upper cell spot always smaller than lower cell spot3
- 3.Both FW always a non-hyaline spot in space 1b.....*bromus*

Caltoris bromus has been reported from Assam, N.E. India and Myanmar (Van Gasse, 2013; Varshney & Smetacek, 2015). This record confirms the presence of *Caltoris bromus* in West Bengal. Robinson *et al.* (2001) record *Bambusa* and grasses as larval hostplants for this species from Hong Kong. This appears to be the first record of the species on *Phragmites* and is therefore an unrecorded larval host plant for this species.

Acknowledgement

The author is grateful to Dr. T.L. Seow, Singapore and Mr. Kalesh Sadasivan, India for the identification of species.

References

- Corbet, A.S., H.M. Pendlebury & J.N. Eliot. 1992. *The Butterflies of the Malay Peninsula*. Malay Nature Society, Kuala Lumpur. 595 pp.
- Ek-Amnuay, P. 2012. *Butterflies of Thailand*. 2nd Ed., Revised. Baan Lae Suan Amarin Printing, Bangkok, Thailand. 943 pp.

Evans, W.H. 1949. *A catalogue of the Hesperiiidae from Europe, Asia, and Australia in the British Museum (Natural History)*. The Trustees of the British Museum, London. xix + 502 pp., 53 pl.

Robinson, G., P.R. Ackery, I.J. Kitching, G.W. Beccaloni & L.M. Hernandez. 2001. *Hostplants of the moth and butterfly*

caterpillars of the Oriental Region. The Natural History Museum, London & Southdene Snd. Bht., Kuala Lumpur. 744 pp.

Varshney, R.K. & P. Smetacek (eds.) 2015. *A Synoptic Catalogue of the Butterflies of India*. Butterfly Research Centre, Bhimtal and Indinov Publishing, New Delhi. ii + 261 pp. + 8 pls.



Fig.1: A 4th instar caterpillar feeding from the host plant

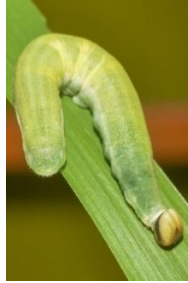


Fig.2: A 5th instar caterpillar resting on the host plant



Fig.3: A pupa formed on the host plant



Fig.4: An underside view of freshly eclosed *Caltoris bromus*



Fig.5: An upperside view of freshly eclosed *Caltoris bromus*