

NEW DISTRIBUTION RANGE FOR *TRYPANOPHORA SEMIHYALINA* KOLLAR, [1844] (INSECTA: LEPIDOPTERA: ZYGAENIDAE: CHALCOSINAE) FROM MAHARASHTRA, INDIA

SHUBHALAXMI VAYLURE

2, Mandar CHS, Plot A/23, Sector-12, Kharghar, Navi Mumbai-410210, Maharashtra.

Corresponding author: shubha@inaturewatch.org

Reviewer: Peter Smetacek

Trypanophora semihyalina Kollar, [1844] has been reported from Southwest India to Northwest India and Northeast India (Ahmed *et al.*, 2015). In December, 2023, I encountered a caterpillar of *T. semihyalina* for the first time in Thane district, Maharashtra, followed by a second observation in Gadchiroli district of the same state in February, 2024 (see Fig. 1). The caterpillar found in Doddhi S. in Gadchiroli was feeding on Tendu *Diospyros melanoxylon* (Ebenaceae) (see Fig. 2) and the one that was found in Ambivli Biodiversity Park, Kalyan (Fig.3) was recorded feeding on Tamarind *Tamarindus indica* (Fabaceae). I tried rearing the caterpillar from Ambivli site; however, it was unsuccessful as the caterpillar escaped after feeding for two weeks. The caterpillar has been identified from Sheikh *et al.* (2021). This observation marks the initial recording of *T. semihyalina* in Maharashtra, representing a range extension from Central India towards Western India.

ACKNOWLEDGEMENTS

I appreciate the support of Kalyan-Dombivli Municipal Corporation, DCB

Bank Ltd., and Lloyds Metals and Energy Ltd. in my research at Ambivli Biodiversity Park and Gadchiroli. Special thanks to the State Forest Department for permission. I am grateful to volunteers Vishaka Chandramore and V. Mohinish Reddy for their help in sighting caterpillars.

REFERENCES

- Ahmed, Z., I. Khatri & N. Arian. 2015. First record of *Trypanophora semihyalina* Kollar, 1844 (Lepidoptera: Zygaenidae: Chalcosiinae) from Pakistan. *Arquivos Entomol6gicos* 13: 377-378.
- Sheikh, T, A. H. Parrey, A. A. Dar. 2021. New addition to the larval food plants of *Trypanophora semihyalina* Kollar, [1844] from India (Lepidoptera: Zygaenidae). *SHILAP Revista de lepidopterologia* 50(197): 115-119,.

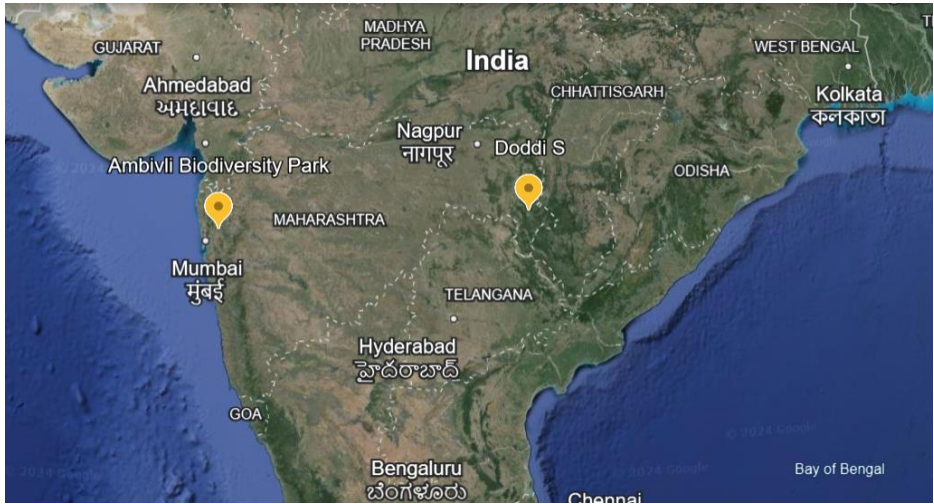


Fig 1: Study area map

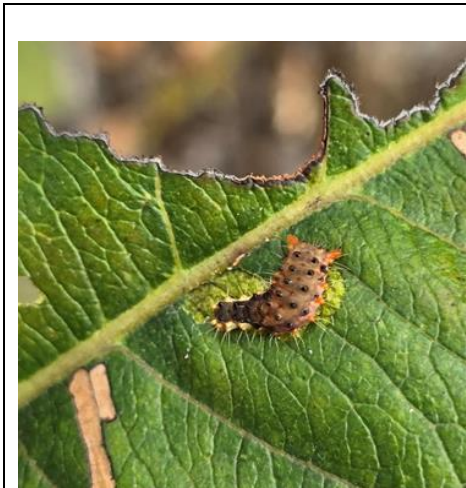


Fig 2: Caterpillar feeding on Tendu in Doddhi S



Fig 3: Caterpillar feeding on Tamarind in Ambivli Biodiversity Park